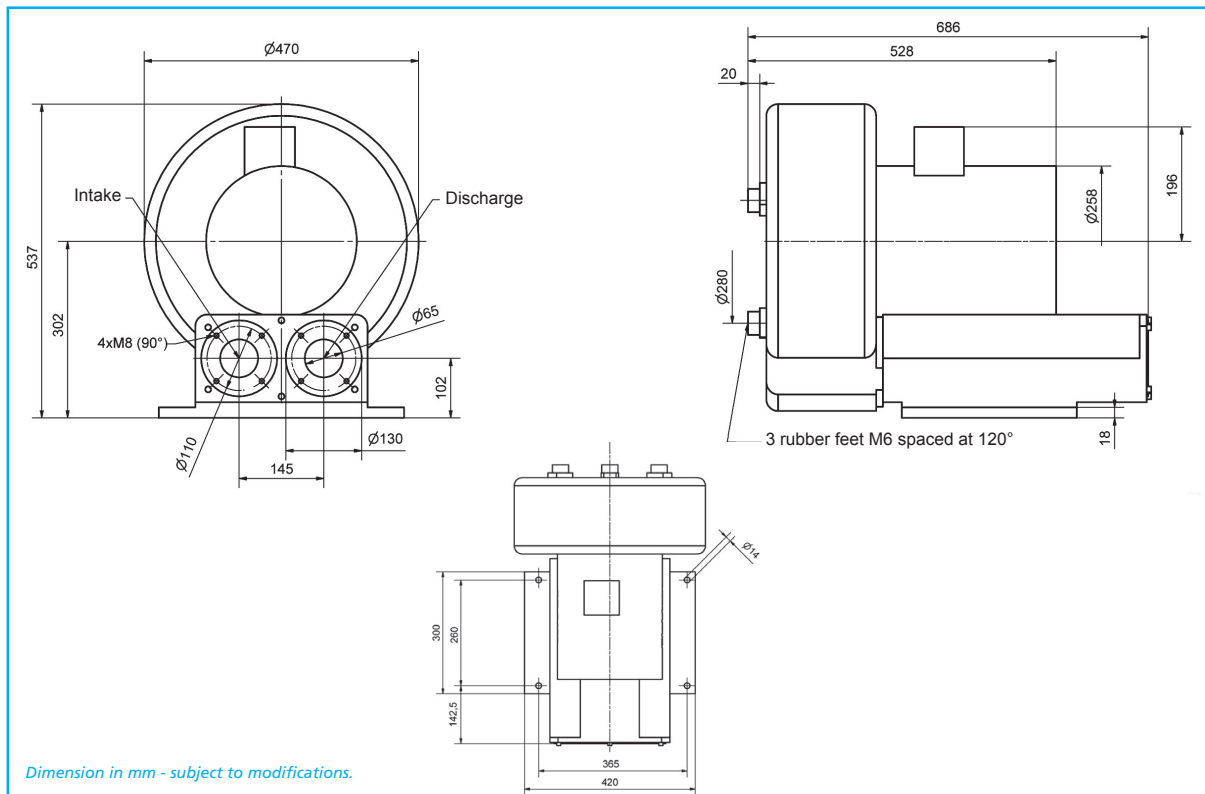
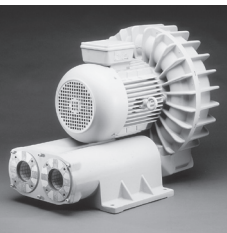


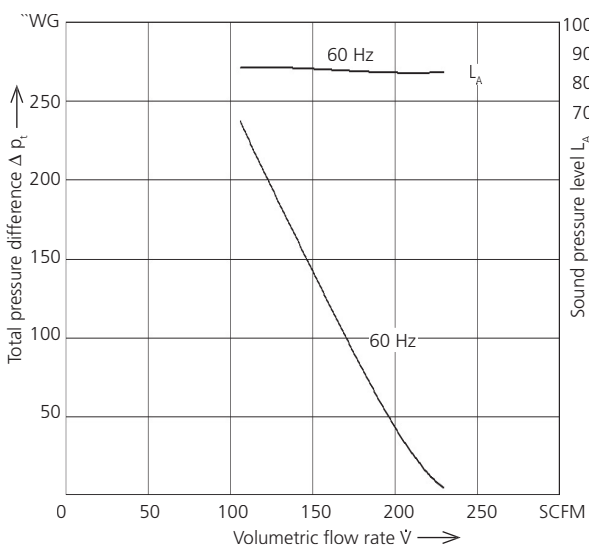
SD 6400 VFD 6D



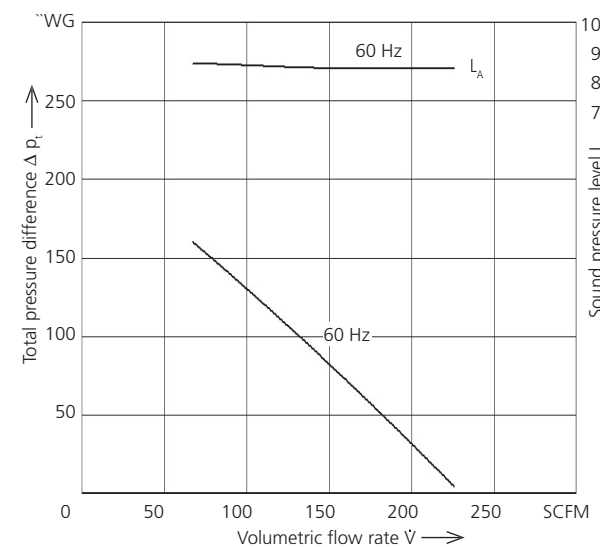
Delivery includes inlet and outlet flanges NPT 2 1/2".

Type	Maximum performance when used as blower			Maximum performance when used as extractor		Motor ratings				Weight lb
	Frequency	\dot{V} max	Δp_t max.	\dot{V} max.	Δp_t max.	Rated output	Voltage	Current	RPM	
	Hz	SCFM	"WG	SCFM	"WG	hp	V	Amp.	min ⁻¹	
SD 6400 VFD 6D	60	229	237	229	156	10	230/460	26,5/13,3	3520	198

Pressure



Vacuum



Technical and constructional subject to change.

Elektror
airsystems gmbh

Richard-Hirschmann-Straße 12
73728 Esslingen/Neckar
Germany
sales@elektror.com
www.elektror.com

FE
FUJIELECTRIC CORPORATION OF AMERICA

Park 80 West Plaza II
USA-Saddle Brook, NJ 07663
fujidc@fecoa.fujielectric.com
www.fujielectric.com